

TOTECH CANADA N.A Inc

Authorized North American Distributor



PRODUCT CATALOGUE



Advanced technology and robust design

Totech Superdry Cabinets are a trusted Industry leader in IPC/JEDEC (MSL) Standards for Moisture Sensitive Devices (MSDs) for Electronics Manufacturing, the Medical field, Aerospace Industry & Additive Manufacturing.

Totech Superdry advanced technology delivers a process combining ultra low humidity (<0.5%) and mild temperatures (40-60°C) for floor life reset proven to replace traditional oven baking of components and boards.

IPC/JEDEC J-STD-033 and 1601 for handling Moisture Sensitive Devices.

SD SERIES

ROBUST DESIGN



FEATURES:

- Maintenance-free U-2000 series drying unit with integrated fan
- ESD safe design (IEC 61340-5-1)
- Limit value monitoring of RH
- Door alarm, humidity alarm
- Digital control panel with humidity and temperature display
- Lockable doors
- Regulated relative humidity
- Suitable for storage and drying according to IPC standards
- Interruption-free and redundant drying by means of 2 drying units (SD 1104, SD 1106 and SD 1704 only)

OPTIONS:

- Automatic nitrogen unit
- Heater (40°C)
- Feeder rack



	SD 151-21	SD 302-21	SD 502-21	SD 702-21	SD 1104-21	SD 1106-21	SD 1704-21
Ext. dimensions (WHD)	500 x 630 x 580 mm	500 x 1127 x 640 mm	880 x 898 x 740 mm	620 x 1840 x 768 mm	1200 x 1840 x 760 mm	1200 x 1840 x 760 mm	1200 x 1840 x 960 mm
Int. dimensions (WHD)	490 x 560 x 530 mm	490 x 1124 x 594 mm	870 x 830 x 702 mm	610 x 1533 x 735 mm	1190 x 1533 x 630 mm	1190 x 1533 x 630 mm	1190 x 1560 x 910 mm
Effective capacity	135 l	320 l	496 l	680 l	1139 l	1139 l	1700 l
Weight	37 kg	68 kg	70 kg	152 kg	176 kg	176 kg	197 kg
Power consumption	35 W/h	35 W/h	35 W/h	35 W/h	70 W/h	70 W/h	70 W/h
Number of shelves	3	7	3	5	5	5	5

Characteristics



U-2000 series dryer:
Air drying to below 2% RH
Regeneration: static
(timer-controlled)



Sensor:
Integrated sensor,
accuracy +/- 2% RH
Offset configuration



Performance:
30 min recovery time after
door opening to below 5% RH



Control:
Humidity and temperature
display with parameter value
input; humidity and door
monitoring functions



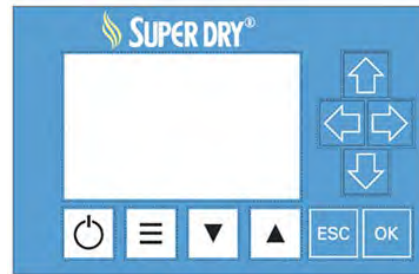
Climate control:
Optional heating up to 40°C
Forced air circulation
through integrated fan



Documentation:
External data logger optional

SD+ SERIES

PRECISION DRYING



Economical and precise

FEATURES:

- Maintenance-free U-2000 series drying unit

The models of the SD+ series are essentially upgraded versions of the SD series.

The cabinets are equipped with high-precision sensors. Dynamic regeneration of the drying units minimizes power consumption.

A second drying unit ensures uninterrupted and redundant drying (SD+ 1104 and 1106 only). Standard equipped with integrated datalogging to removable storage. Data collection and optional datalogging to PC or server through standard ethernet interface available.

- ESD safe design (IEC 61340-5-1)
- Limit value monitoring (RH; °C)
- Door alarm, humidity alarm
- Lockable doors
- Dynamic regeneration
- Integrated data logger
- Including software for PC visualisation - Online monitoring

- Ethernet interface
- Regulated relative humidity

OPTIONS:

- Additional shelves
- Heater (40°C)
- Alarm light
- N² (nitrogen)



	SD+ 302-22	SD+ 1104-22	SD+ 1106-22
Ext. dimensions (WHD)	500 x 1127 x 640 mm	1200 x 1840 x 760 mm	1200 x 1840 x 760 mm
Int. dimensions (WHD)	490 x 1124 x 594 mm	1190 x 1533 x 630 mm	1190 x 1533 x 630 mm
Effective capacity	320 l	1139 l	1139 l
Weight	68 kg	176 kg	176 kg
Power consumption	24 W/h	48 W/h	48 W/h
Number of shelves	7	5	5

Characteristics



U-2000 series dryer:
Air drying to below 2% RH
Regeneration: dynamic



Sensor:
Integrated Rotronic sensor,
accuracy +/- 0.8% RH
& +/- 0.2°C



Performance:
30 min recovery time
afterdoor opening
to below 5% RH



Control:
PLC with limit value input through
text display or web interface
Door, temperature and humidity
alarm



Climate control:
Optional heating up to 40°C
Forced air circulation
through integrated fan



Documentation:
Integrated data logger
Climate data recording
Free Totech Viewer software

SDF SERIES

SDF 2100 XL FEEDER USA



- 54 Inch our Deep Largest Feeder cabinet
- Custom Reel Racks
- Custom Feeder Racks
- Custom Board Handling Solutions



: Modular design: : modularly designed dry cabinet. The main modules include dry units, control box, sensor, shelves and castors. • our cabinets use our high-quality and highly reliable Dry & Control system

: Humidity control: <1%RH

: ESD safe design: Cabinet is with ESD metal painted steel body (106 Ohm/sq), Dissipative glass windows (in and outside 108 Ohm/sq), stainless steel shelves, will comply with IEC 61340-5-1.

: Convenient Operation: cabinet has a digital control panel, you can control the humidity precisely from 1% to 50%RH, by adjusting $\pm 0.1\%$ RH. Humidity, temperature and alarm functions are shown and can be adjusted by digital control panel.

Key Lock function on the digital control panel prevents unintended changes of setting. Sensor calibrate function is available with the digital panel.

: Maintenance free design: Totech dry cabinet works by dry units. An interlocked fan causes the air to circulate through the dry unit, while passing through the dry unit moisture in the air is absorbed by the zeolite desiccant. During periodic regenerating of the zeolite desiccant by heating, the absorbed humidity is evaporated and exhausted through the external shutters of the dry unit. The process is physical, and no extra maintenance at all.

: Lockable doors: Every door can be locked separately with a key.

: Humidity alarm : Humidity alarm buzzer will sound if the humidity exceeds set values. Tower light (optional)

: Wifi Data monitoring (Optional): Monitor and record data of humidity and temperature of dry cabinets 24/7 real time alarm

: N2 door purge timer (optional)

Characteristics



U-2000 series dryer:

Air drying to below 2% RH
Regeneration: static
(timer-controlled)



Sensor:

Integrated sensor,
accuracy +/- 2% RH
Offset configuration



Performance:

30 min recovery time after
door opening to below 5% RH



Control:

Humidity and temperature
display with parameter value
input; humidity and door
monitoring functions



Climate control:

Optional heating up to 40°C
Forced air circulation
through integrated fan



Documentation:

External data logger optional

MSD SERIES

MODULAR DESIGN



The cabinet that grows with your requirements.

FEATURES:

- Maintenance-free U-5000 series drying unit
- ESD safe design (IEC 61340-5-1)
- Limit value monitoring (RH; °C)
- Door alarm, humidity alarm
- Coated sliding shelves
- Lockable doors
- Regulated relative humidity below 0.5% RH
- Dynamic regeneration
- Integrated data logger
- Online monitoring

- Free software for visualisation on PC
- Ethernet interface
- Castors and adjustable legs

OPTIONS:

- Passive MSD 1223 add-on cabinet
- Automatic nitrogen unit
- Additional drying unit
- Convection module with heater (40 °C)

The MSD drying cabinets can grow with your demand. The modules are designed for easy extension to suit your needs.



MSD 1222-55

MSD 1223-00 add-on cabinet

Capacity MSD 1222-55:

Ext. dimensions (WHD)	840 x 2040 x 900 mm	840 x 2040 x 900 mm
Int. dimensions (WHD)	830 x 1780 x 850/730 mm	830 x 1780 x 850 mm
Effective capacity	1200 l	1255 l
Weight	140 kg	125 kg
Power consumption	30 W/h	30 W/h
Number of shelves	4	4

Example storage	
Reels: 352	
Diameter: 330 mm	
Thickness: 8 mm	

Characteristics



U-5000 series dryer:
Air drying to below 0.5% RH
Regeneration: dynamic



Sensor:
Integrated Rotronic sensor,
accuracy +/- 0.8% RH
& +/- 0.2°C



Performance:
15 min recovery time after
door opening to below 1% RH



Control:
PLC with limit value input through
touchscreen display or web interface
Door, temperature and humidity
alarm



Climate control:
Optional heating up to 40°C
Forced air circulation



Documentation:
Integrated data logger
Climate data recording
Free Totech Viewer software

XSD SERIES

HIGH END TECHNOLOGY



Perfection down to the last detail

FEATURES:

- Maintenance-free U-5000 series drying unit with
- Insulated cabinet body
- Powerful radial fan
- Heater (40°C) (XSDB)
- Heater (60°C) (XSD)
- ESD safe design (IEC 61340-5-1)
- Limit value monitoring (RH; °C)
- Door, humidity and temperature alarm
- Sliding grate shelves (XSD only)

- Lockable doors
- Regulated relative humidity below 0.5% RH
- Dynamic regeneration (XSDB & XSD series only)
- Ethernet interface
- Interior LED light (XSD & XSDB series only)

OPTIONS:

- Drawers
- Heater (60°C) (XSDB)
- 7" or 10" touchscreen display

The premium cabinets of the XSD series combine high-performance drying along stable temperature and humidity curves with top-class design and craftsmanship.



	XSDB 701-55	XSDB 1412-55	
Ext. dimensions (WHD)	700 x 1930/2110 x 808 mm	1432 x 1930/2110 x 808 mm	
Int. dimensions (WHD)	544 x 1504 x 600 mm	1315 x 1504 x 685 mm	
Effective capacity	490 l	1390 l	
Weight	142 kg	230 kg	
Power consumption	230 W/h (40°C)	230 W/h (40°C)	
Number of shelves	5	10	

Characteristics



Dryer:

Air drying to below 0.5% RH
Regeneration: dynamic



Sensor:

Integrated Rotronic sensor,
accuracy +/- 0.8 RH
& +/- 0.2°C



Performance:

10 min recovery time after
door opening to below 0.5% RH



Control:

PLC with limit value input through
touchscreen display or web interface
Door, temperature and humidity
alarm



Climate control:

Heating up to 40°C
(optional up to 60°C)
Forced air circulation
through integrated fan



Documentation:

Integrated data logger
Climate data recording
Free Totech Viewer software

XSDC SERIES

Cooling / Dry & Cooling

The XSDC series is the ideal solution for controlled cooling. It provides a stable temperature for all cooling storage needs like solder paste.

- Cooling 601-02 2-20°C (XSDC)
- Cooling and Drying 601-02 2-20°C (XSDC)
- Touchscreen display (optional on XSDC 601-02)
- Integrated data logger (Not for XSDC 601-01) - Free software for visualization on PC



	XSDC 601-01	XSDC 601-05	
Ext. dimensions (WHD)	702 x 2060 x 672 mm	702 x 2060 x 672 mm	
Int. dimensions (WHD)	550 x 1526 x 579 mm	550 x 1526 x 579 mm	
Effective capacity	466 l	466 l	
Weight	113 kg	113 kg	
Power consumption	60-100 W/h	60-100 W/h	
Number of shelves	3	3	

Characteristics



Dryer:
XSDC 601-01
Cooling only
2-20°C

Dryer:
XSDC 602-05
Cooling and Drying
2-20°C



Sensor:
Integrated Rotronic sensor,
accuracy 0.2°C
(XSDC 601-02 only)



Performance:
20 min recovery time after
10 hour power down to
below 5°C



Control:
PLC with limit value input through
text display and web interface
(XSDC 601-02)
Door and temperature alarm



Climate control:
Cooling 2-20°C
Forced air circulation
through integrated fan



Documentation:
Integrated data logger
Climate data recording
Free Totech Viewer software
(all XSDC 601-02 only)

SDR SERIES

Made to measure dry rooms. We assist you in choosing the right dimensions, colour, drying capacity and software for your specific application. We use top-quality series components and advanced technology to build affordable dry rooms that meet your requirements.



Characteristics



U-5000/U-7000 series dryer:
Air drying to below 5% RH
Regeneration: dynamic



Sensor:
Integrated Rotronic sensor,
Accuracy +/- 0.8% RH
& +/- 0.2°C



Performance:
Depending on dry room size



Control:
PLC with limit value input through
display or web interface
Door, humidity and temperature
alarm



Heating:
Active heating by means
of integrated heater, up
to 60°C (optional)



Documentation:
Integrated data logger
Climate data recording
Free Totech Viewer software

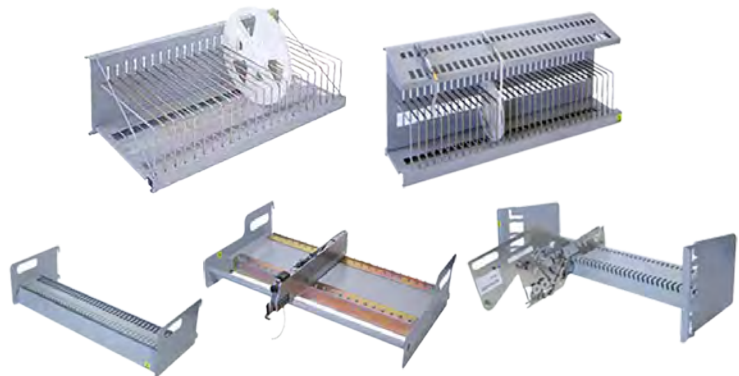
SMT CARTS



We offer a range of customizable ESD SMT carts, reels, feeders, and other accessories for most major brand automated material handling robots (AMRs). These products help ensure safe and efficient handling of electronic components during the SMT manufacturing process. **Made in the USA**

ROBOT READY ESD AMR CUSTOM CARTS

- SMT Reel Rack Carts
- SMT Feeder Racks Carts
- Board Handling Solutions



Custom-made solutions. You can customize the shelves to fit any application. The shelves can be custom made based of different requirements. Single cart for multiple applications. Shelves change without tooling & long lifespan future proof your applications transport SMT line setups.

SOFTWARE

USER FRIENDLY DOCUMENTATION

TOTECH VIEWER

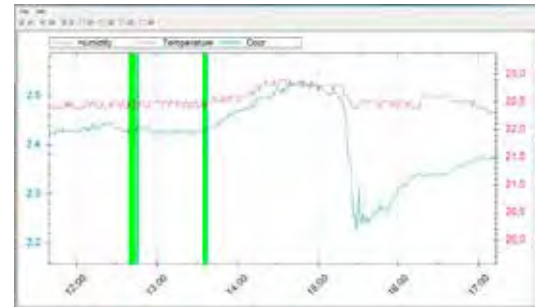
Standard cabinet monitoring with integrated logger (standard for SD+, MSD, HSD, XSDB, XSD, XSDV)

FUNCTIONS:

- Transfer of sensor, alarm and machine data from integrated storage through ethernet to PC
- User-friendly display of all relevant data
- Data processing in MS Excel

BENEFITS:

- Seamless documentation
- Excellent process safety



TOTECH MONITOR

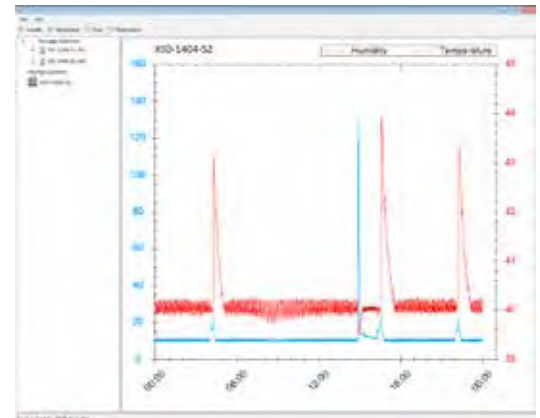
Real-time cabinet monitoring with alarm function (optional)

FUNCTIONS:

- Online monitoring of humidity and temperature
- Management of data on multiple drying cabinets
- Measurements displayed on PC in table or chart format
- Automatic device identification
- Real-time alarm messages via e-mail

BENEFITS:

- Seamless documentation
- Excellent process safety
- Tamper-proof
- Fast response thanks to real-time monitoring



MSL 2.5

Reliable cabinet and component monitoring (optional)

CABINET MONITORING:

- Online monitoring of humidity and temperature
- Management of data of multiple drying cabinets
- Measurements displayed on PC in table or chart format
- Automatic device identification

COMPONENT MONITORING:

- Recording of all loading and unloading processes
- Dynamic calculation of remaining floor life time
- Documentation of drying process
- Lockout function upon expiry of floor life time

COMPONENT LOGISTICS:

- Continuous localisation of all components
- Traceability of all stock movements
- Information and evaluation about unused material



All data from all cabinets available at a glance



Dynamic calculation of remaining floor life time



Stock reports available at a push of a button

OPTIONAL EQUIPMENT AND ACCESSORIES

Options that make all the difference



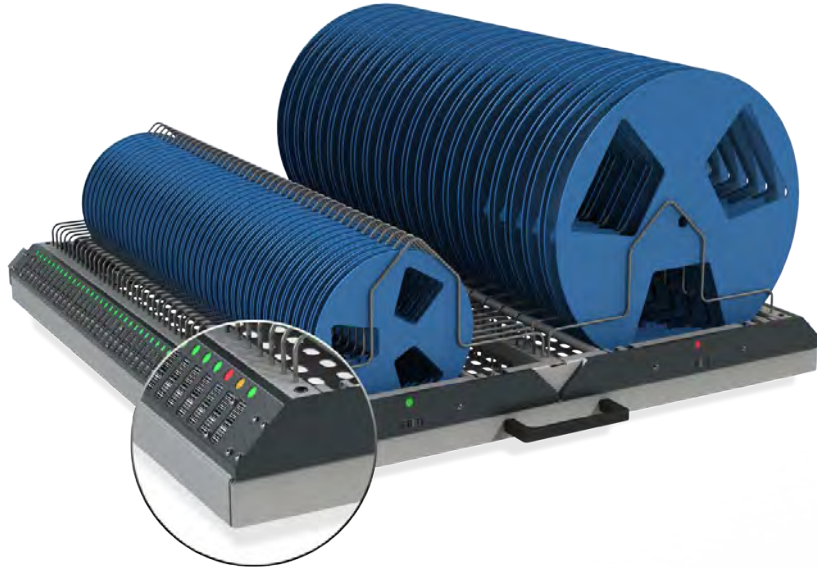
	Additional shelves	Separation elements	SMD reel holders	Pull-out SMD reel holders	Reel holders on sliding shelves	External alarm lights	Height adjustable feet	ESD reels	Manual/autom. nitrogen unit	Pull-out feeder system	Heater 40°/60°C	Honeycomb module for IC tubes, etc., also available with optical position indicator	Feeder holder	Data logger and software
SDB 151-40	coated	●	●				●		●/○		●/○			●
SDB 1104-40	coated	●	●	●			●	●	●/○		●/○	●	●	●
SDB 1106-40	coated	●	●	●			●	●	●/○		●/○		●	●
SD 151-21	chrome steel	●	●			●	●		●/●		●/○			●
SD 302-21	chrome steel	●	●			●	●		●/●		●/○			●
SD 502-21	chrome steel	●	●			●	●		●/●					●
SD 702-21	chrome steel	●	●			●	●	●	●/●				●	●
SD 1104-21	chrome steel	●	●	●		●	●	●	○/●		●/○	●	●	●
SD 1106-21	chrome steel	●	●	●		●	●	●	○/●		●/○		●	●
SD 1704-21	chrome steel	●	●			●	●	●	○/●	●	●/○	●	●	●
SD+ 302-22	chrome steel	●	●			●	●	●	●/●		●/○		●	●●
SD+ 1104-22	chrome steel	●	●	●		●	●	●	○/●		●/○	●	●	●●
SD+ 1106-22	chrome steel	●	●	●		●	●	●	○/●		●/○		●	●●
HSD 1104-52	stainless steel	●	●	●		●	●	●	○/●		●/○	●	●	●●
HSD 1106-52	stainless steel	●	●	●		●	●	●	○/●		●/○		●	●●
HSD 1704-52	stainless steel	●	●			●	●	●	○/●	●	●/○	●	●	●●
MSD 1222-54	coated/ stainless steel	●	●		●	●	●●		○/●		●/○	●	●	●●
MSD 1223-00	coated/ stainless steel	●	●		●		●●				●/○	●	●	
XSDB 701-54	stainless steel		●		●	●	●●	●	○/●		●●/●	●	●	●●
XSDB 1412-54	stainless steel		●		●	●	●●	●	○/●		●●/●	●	●	●●
XSD 701-54	stainless steel		●		●	●	●●	●	○/●		●●/●●	●	●	●●
XSD 1412-54	stainless steel		●		●	●	●●	●	○/●		●●/●●	●	●	●●
XSDV	coated/ stainless steel	●	●	●	●	●	●●	●	○/●	●	●/●	●	●	●●
XSDC 601-01	coated		●				●●	●						●
XSDC 601-02	coated		●				●●	●						●●
XSDC 1412-54	stainless steel	●	●	●	●	●	●●	●	○/●	●	●/●	●		●●
XSDR 702-54	stainless steel		●		●	●	●●	●			●●/●●			●●

● optional ●● standard ○ not available

PICK BY LIGHT

Options that make all the difference

NEW FOR 2023



Looking for a solution to streamline your storage processes? The MSL software offers integration with Pick by Light, providing visual guidance for accessing stored items during both check-in and retrieval.



Totech Canada inc.

Authorized North American Distributor

Head Office:

5 Rue Binette, Brownsburg-Chatham,
J8G1W9, Quebec, Canada

USA Warehouse :

111 Ling Road Rochester New York 14612
USA

Canada Warehouse:

128 Rue Principale, Brownsburg-Chatham,
J8G 2Z7, Quebec, Canada

Toll-Free:1-877-379-2224

Sales : Sales@totechdrybox.com

Service : Ed@totechdrybox.com

www.totechdrybox.com